

# PASSION IS ALWAYS IN FASHION!

# PASSION



## TAKE THE CHALLENGE!

July 1, 2017 – June 30, 2018

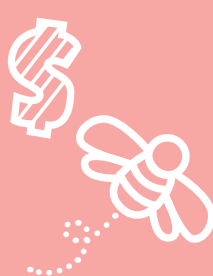
For each month during the 2017–2018 Seminar year that an Independent Beauty Consultant places a cumulative \$600\* or more wholesale Section 1 order, she will receive an **exclusively designed charm bracelet by renowned jewelry designer R.J. Graziano**. This month's bracelet is totally charming and features the power word **PASSION**. When you have a passion for helping women look and feel beautiful, this sparkling bracelet could be your new fashion!










## CAREER CONFERENCE CONSISTENCY CHALLENGE

Dec. 1, 2017 – Feb. 28, 2018

Want to go places? Just focus on some new faces! And when you achieve the *New Faces Take You Places* Challenge for the months of December, January and February *and* attend Career Conference, you will receive the exclusive consistency challenge **bracelet with a crystal-encrusted charm featuring the power word FOCUS**. And there are even more great rewards that could come your way! Check them out on *Mary Kay InTouch*®.



## LOOK WHERE NEW FACES CAN TAKE YOU!

-  **NEW! *New Faces Take You Places* Seminar Consistency Challenge**
-  **NEW! Star Consultant Quarter**
-  **EXTENDED! February Starter Kit Product Bonus**
-  **February and March Double Team-Building Bonus**
-  **February and March Unit Circle Retail Credit**
-  **All In With 8! Challenge**
-  ***New Faces Take You Places* All-Star Booster**

### AND DON'T FORGET:

- END Star Consultant Quarter 3!
- Seminar Awards!
- Top Sales Director Trip!

Go to *Mary Kay InTouch*® for complete rules and details.

 = Selling    = Growth    = Sharing

MARY KAY

NEW  
FACES  
take you  
PLACES

\*The \$600 or more wholesale Section 1 order requirement per month can be placed in one single order or placed in cumulative orders, as long as the orders are placed in the same calendar month. Customer Delivery Service, Guest Checkout and EZ Ship order amounts also will count toward your \$600 or more wholesale Section 1 requirement. You'll receive your bracelet inside your qualifying order. One bracelet per contest achiever each month.